

User Instructions

# Doulton® Taste 2 Water Bottle with Filter



Great TASTE without the Waste!

Congratulations on purchasing your  
Doulton® Taste 2 Water Bottle with Filter!

Doulton®



Manufactured by:

Doulton Water Filters, Newcastle, Staffordshire,  
ST5 9BT, United Kingdom.

Telephone:

+44 (0) 1782 664420

Fax:

+44 (0) 1782 664490

Email:

filtersales@doulton.com

Website:

www.doulton.com

Doulton® is a trademark registered to Fairey Industrial Ceramics Ltd.

Doulton®



## Preparing Your Bottle to Filter. What to do now...

Doulton®

### 1. Prime your filter cartridge

- Remove the filter cartridge from the bottle and bag.

- Rinse the bottle and cartridge with clean water.

- Place the cartridge in the bottle (or a clean bowl) and immerse in cold clean tap water for 15 minutes to allow the filter in the cartridge to become fully wetted.

**This is important - the filter flows best when wet.**

- Throw the water away, remove the cartridge and rinse thoroughly with clean water.

### • For Taste 1 Filter Bottles see fig 5A

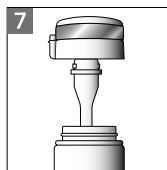
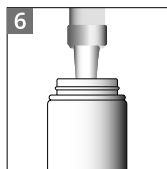
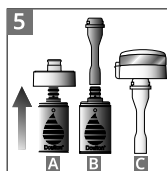
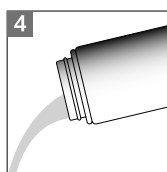
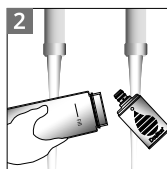
Firmly push the cartridge into the mouth piece, ensuring that it is fully located (moistening the o rings with clean water will make this easier)

### • For Taste 2 Stainless Steel Filter Bottles see fig 5B & 5C

Firmly push the cartridge into the white adaptor & twist the bayonet on the white adaptor into place in the cap/mouth piece, to connect the filter cartridge.

- Fill the bottle as shown up to 3 cm from the top - roughly the depth of 3 fingers, and thread the cap/mouthpiece to the top of the bottle with the primed filter.

- All done! You can now enjoy great tasting Doulton water everywhere!



### 2. Using your bottle

- The bottle is designed for drinking water 4°C to 40°C only.
- The bottle is not suitable for children under the age of 3 years.
- Please note; the filter is only intended to filter treated municipal mains drinking water.
- A sucking action is required to draw water through the filter in normal use. If the water flow from your wet filter reduces significantly it is time to replace your cartridge.
- The cartridge has a lifetime of 300 Litres (600 fills) dependent upon the quality of your tap water.
- When fitting a new cartridge, follow the priming instructions in section 1.
- If the cartridge is allowed to dry out, we advise that you repeat the priming process to thoroughly wet the cartridge and optimise the flow.

### 3. Looking after your filter bottle

- Remove and rinse cartridge with clean cold water (no detergent) regularly.
- Hand wash the bottle, mouthpiece and lid regularly in warm water and mild detergent, rinse with clean water and dry. If you have a Taste 1 bottle, take care not to dislodge the air valve in the mouthpiece.

NB: The filter bottle is not designed to be washed in a dishwasher.

### 4. Disposal

- Dispose of your used cartridge with your general household waste.
- If you wish to dispose of your bottle, please check local recycling advice. The clear bottle is Tritan™ (PCTG), the opaque Taste 2 bottles are stainless steel, mouthpiece and lid are polypropylene and silicone. Don't forget that your bottle is completely re-useable - you just need to fit a new cartridge!

### Additional notes

- Always store spare cartridges, sealed in their packaging in a cool dark place.
- To ensure that your drinking water is always fresh, discard and replace water that has been contained in the bottle for longer than 24 hours.
- The cartridge contains carbon, so some black particles may be seen in the packaging and bottle, these should disappear after priming.
- Doulton® Water Filters cannot accept liability if the user instructions are not followed.
- For more information, after sales advice and to purchase replacement cartridges, visit [www.doulton.com](http://www.doulton.com)

### LEGAL DISCLAIMER

In the absence of any negligence or other breach of duty by us, the installation and use of this product is entirely at your own risk. You must at all times observe and comply with our instructions (whether set out in the appliance manual or otherwise) relating to the installation and use of this product. We will not be liable nor responsible to you for any loss or damage, legal disputes or conflicts of interests and other adverse events you suffer as a result of your failure to observe or comply with our instructions or otherwise results from your misuse or irresponsible or negligent use of the product or as a result of any events outside of our control. To the maximum extent permitted by any applicable laws, we make no warranty, representation or guarantee (whether express, implied or otherwise) regarding the fitness, merchantability, or suitability of this product for any unreasonable or unforeseeable purpose. This disclaimer does not affect your statutory consumer rights or otherwise restrict or limit any liability that we cannot lawfully exclude under any applicable laws.